



Ridge Creek Fire

Idaho Panhandle National Forests, Coeur d'Alene River

Ranger District

Fire Information 208-953-7022

Media Information 989-292-9373

2023.ridgecreek@firenet.gov

<https://inciweb.nwcg.gov/incident-information/idipf-ridge-creek>



August 20, 2023

Location: Approximately 3.5 miles east of the north tip of Hayden Lake, along the Hayden Creek Road (FSR 437) from the Ridge Creek drainage to South Chilco Mountain.

Start Date: 8/3/2023 **Cause:** Human/Under Investigation **Size:** 4,099 acres **Containment:** 19%

Total Personnel: 576 **Engines:** 25 **Heavy Equipment:** 6 **Crews:** 14

Containment of the Ridge Creek Fire is now estimated at 19%; acreage is now estimated at 4,099. This reflects the substantial work done to strengthen containment lines in the south and south western areas of the fire. Crews will continue to advance containment lines northward on both east and west flanks of the fire.

A community meeting for the public is planned for 3:00 PM this Sunday afternoon, August 20, at the Athol Community Center, 30355 3rd St., Athol, ID 83801. The meeting will be live-streamed on the Idaho Panhandle NF Facebook Page: <https://www.facebook.com/USFSIPNF/>

FIRE STATUS

Crews have been able to hold and strengthen firelines on the Ridge Creek Fire, particularly along the southern and western flanks of the fire; this is reflected in the new estimates of containment. Three crews will be working their way north along the west flank of the fire today. Additional staff will similarly be working the east flank of the fire. When operational staff determine that these lines have been sufficiently secured, broadened, and repeatedly checked for residual heat, additional containment lines in black will be added to fire boundaries on maps. A night shift will continue, to take advantage of our more moderate weather, using firing operations to improve and widen containment lines by burning away shrub and surface layer fuels. Air operations yesterday was unable to use our available aircraft due to the severely limited visibility in the area of the fire. The expectation for today is that smoke will clear late this morning or early this afternoon and air operations will then be able to continue their support of ground operations.

A night shift of engines will continue their patrols on the west, south, and east fire perimeters to monitor fire behavior.

Smoke from the Ridge Creek Fire, and smoke from fires to the west and north of the Hayden Lake area, including fires in Canada, will likely remain visible on Sunday with some clearing later in the day.

WEATHER AND FIRE BEHAVIOR

Weather today and into the week will moderate, bringing daytime high temperatures from the mid-70s to 80 degrees. Today the temperature at mid-slope will approach 80 degrees. Winds are forecast to be light,

at 6-7 mph out of the northeast with variable gusts from 13-15 mph depending on elevation. Relative humidity will vary between the mid-20s to mid-30s. Winds out of the northeast will tend to move the fire back into its existing footprint making conditions for crew members less challenging than those experienced late last week. There is a small chance of spotty showers today, with rain becoming more likely over the next several days. Smoke from the Ridge Creek Fire, and smoke from fires to the west and north of the Hayden Lake area, including fires in Canada, is likely to linger today, but should at least partially clear this afternoon. Air quality information is available at www.airnow.gov and www.wildlandfiresmoke.net.

EVACUATION STATUS

The Kootenai County Office of Emergency Management has issued an alert to inform residents of the identification of **READY, SET, GO** areas in the vicinity of the Bunco Road and Hayden Lake. Status for residents in the Bunco Road area has been change to '**SET**' and the '**READY**' area has been expanded. In '**SET**' status, residents are directed to be prepared for an evacuation if notified.

The Kootenai Office of Emergency Management provides the following direction for residents in areas designated with a **SET** status: "you are alert to the Ridge Creek Fire in your area, that you are packed to leave and prepared to leave at a moment's notice if you must evacuate. If you have livestock or special circumstances you have begun to take the necessary steps to address these concerns and made arrangements to relocate livestock if necessary."

A map of the revised **READY, SET, GO** areas is included with this update. All residents should be familiar with evacuation procedures and consistently adhere to good fire prevention measures. More information is available at www.kcsheriff.com/186/Emergency-Management."

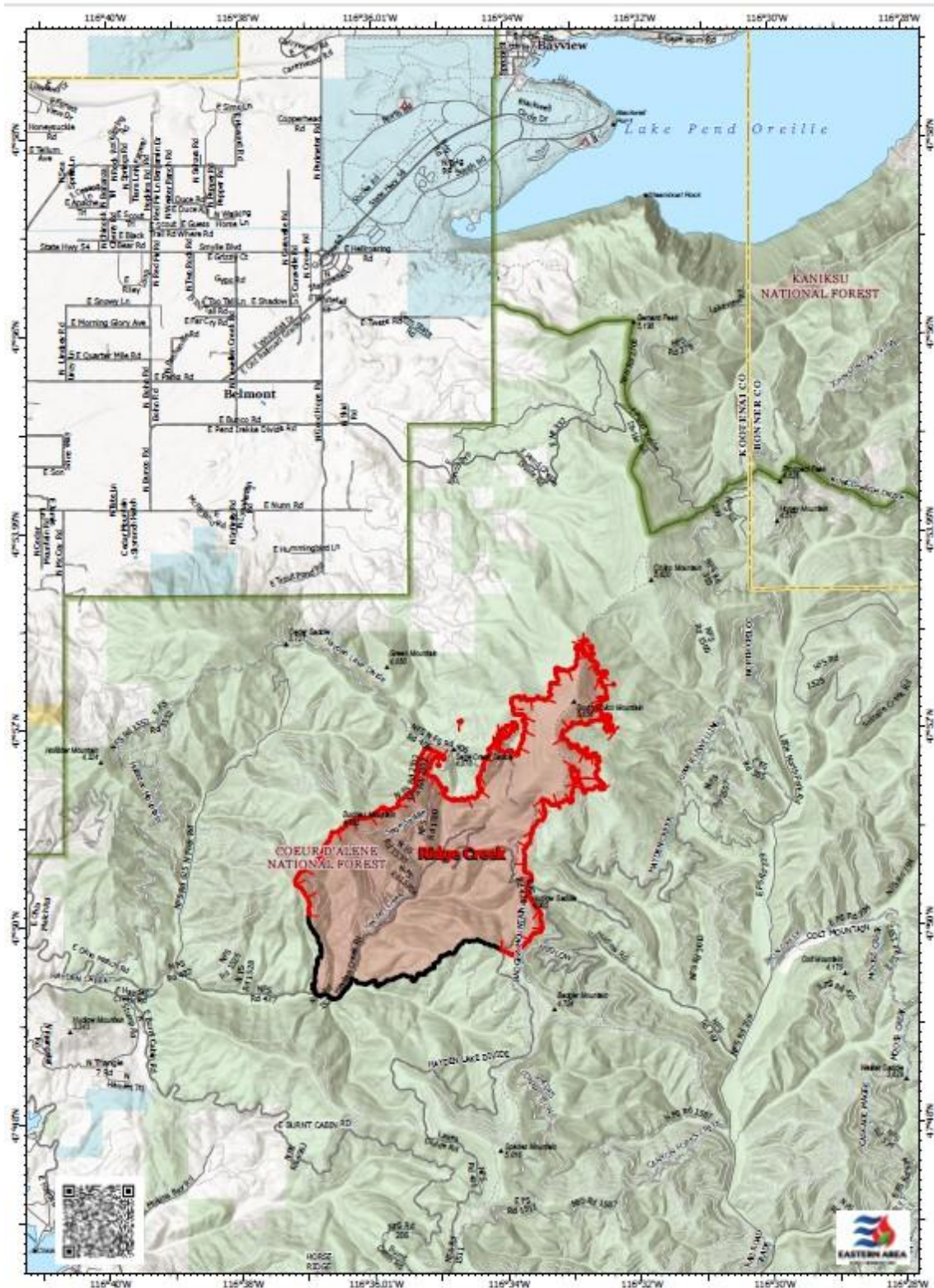
CLOSURES AND SPECIAL MESSAGES

There is a 24-hour per day Temporary Flight Restriction (TFR) in place for the Ridge Creek Fire to prevent incursion of civilian aircraft into the area used by fire-fighting aircraft. This restriction also applies to the use of drones in the TFR area.

Firefighting aircraft are shared resources among numerous fires within the region, including the Ridge Creek Fire. These aircraft will continue to use area waterways, including Hayden Lake, for fire suppression efforts. This means that residents and recreational boaters are likely to see either helicopters or fixed-wing aircraft using the lake. For planes in particular, this requires a long, linear approach and exit from the lake. This restricts their ability to maneuver abruptly should watercraft be within their flight path, creating a serious safety hazard for both boaters and pilots. **The Ridge Creek Fire has a substantial fleet of aircraft available to support ground operations. Expect to see both fixed-wing aircraft and helicopters working, particularly on the northeast area of the fire. If you are a recreational boater and you observe aircraft using either Lake Hayden or Lake Pend Oreille, you should restrict your activities to the shore area of the lakes.**

The Coeur d' Alene Dispatch Zone has issued Stage II Fire Restrictions for the Idaho panhandle. All of Kootenai County is within the Stage II Fire Restrictions area. See the flyer included with this update.

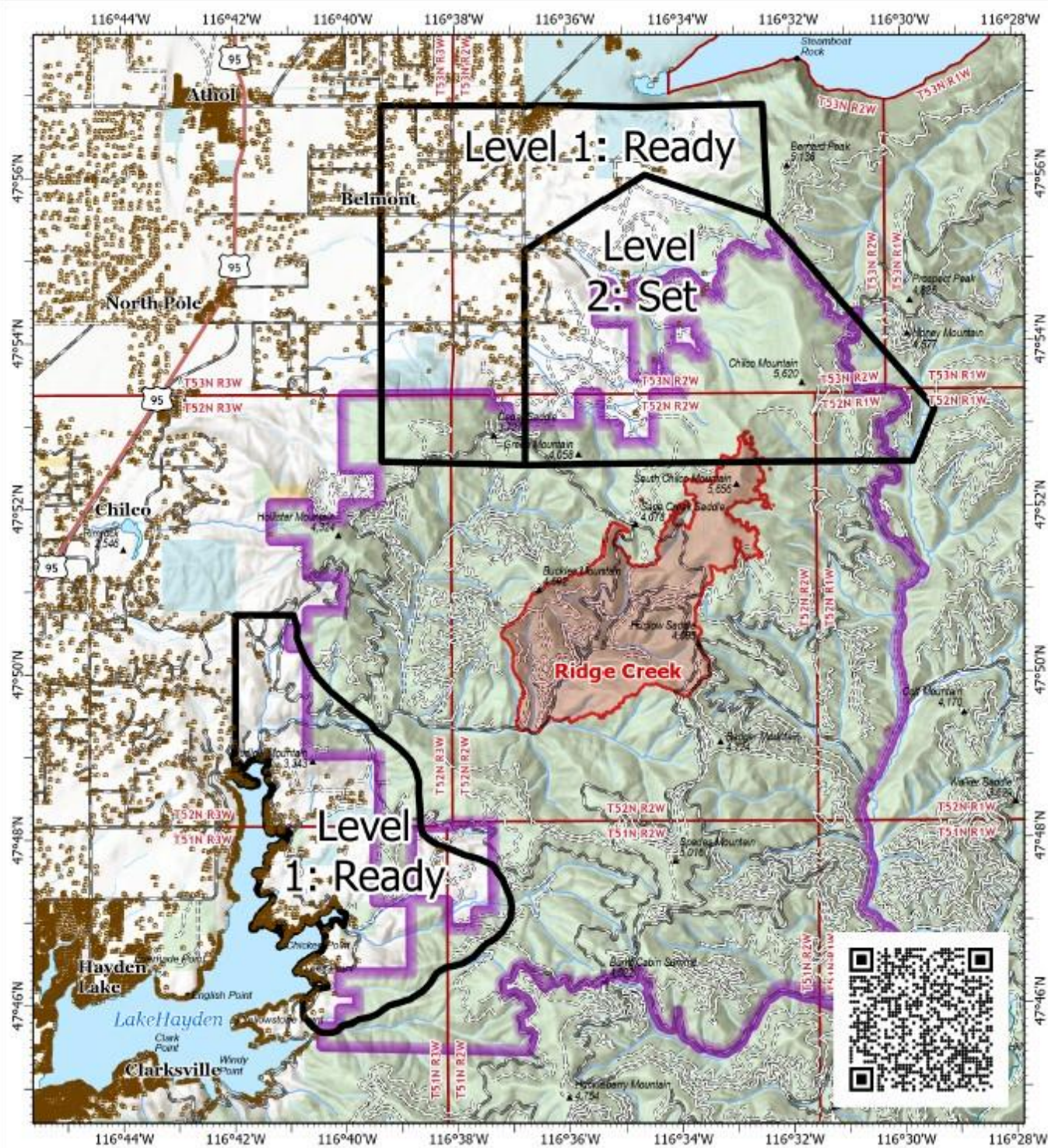
The Idaho Panhandle National Forests issued an emergency closure (Closure Order #01-04-03-23-002) effective August 4, 2023. This Order is for public and firefighter safety due to heavy fire traffic on the area impacted on the Coeur d'Alene River Ranger District, and prohibits all methods of travel (foot, mechanized, motorized and stock) on Forest Service Roads 392, 428A, 437, 1511, 1530, 1552, 1587 and Forest Service Roads 206 and 406 north of their junction, Forest Service Trails 69, 78, 234, and 802 as well as within the described area.



PIO
RIDGE CREEK
IDIFF000447
08/20/2023 Day
 4,099 acres at 8/19/2023 1430 hrs
 Acres from IN
 North American 1983 Datum, LatLong 1983
 0 0.5 1 2 Miles

- Bureau of Land Management (BLM)
- State
- US Forest Service (USFS)
- Wildlife Daily Fire Perimeter
- State
- National Forest





PIO
Ready, Set, Go and Closures

RIDGE CREEK
IDIPF000447
08/20/2023 Day

4,099 acres at 8/19/2023 1430 hrs
Acres from IR

North American 1983 Datum, LetLong Grid



Readiness Level Area



Wildfire Daily Fire Perimeter



Closure Areas

Land Management

BLM

State

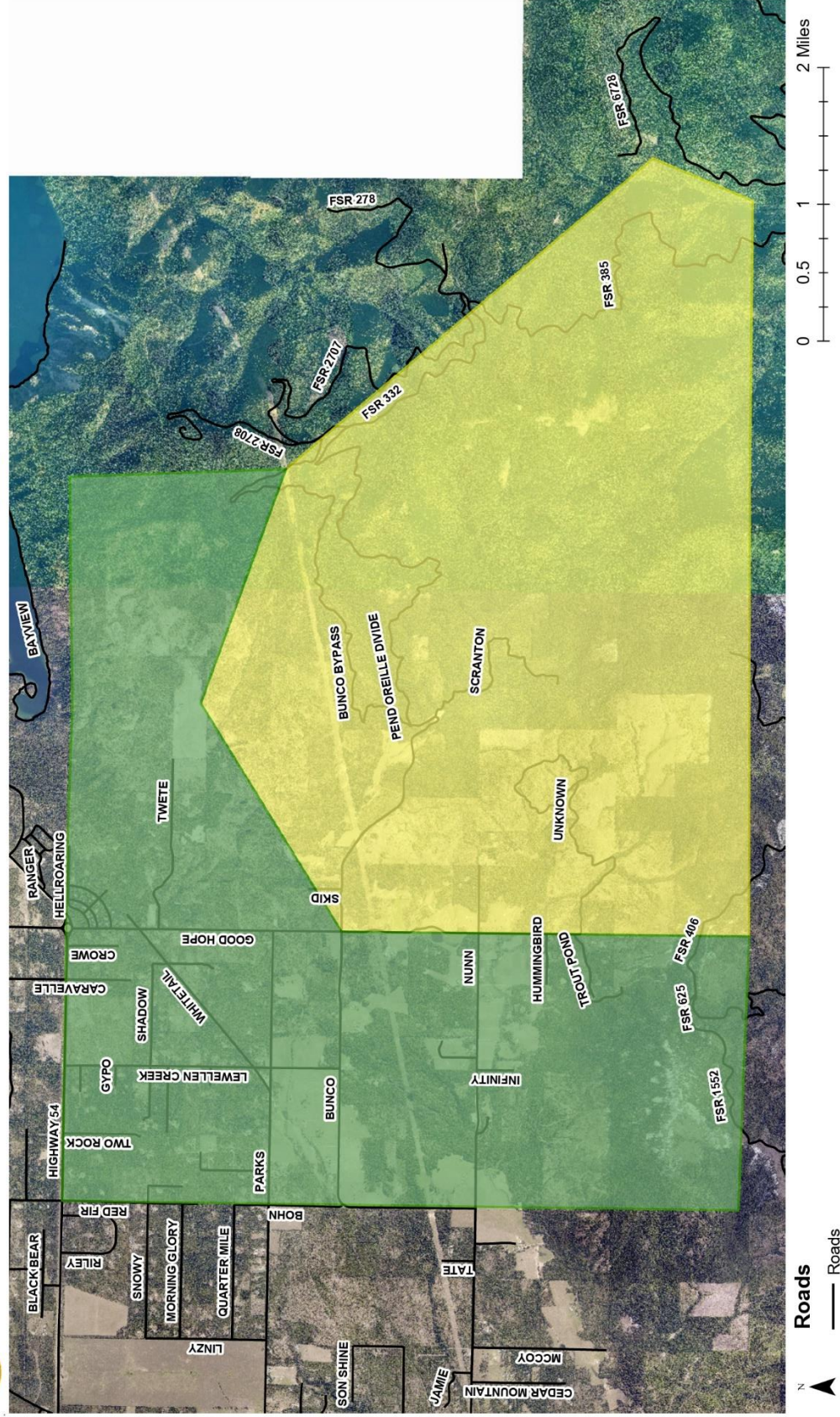
USFS

0 0.75 1.5 3 Miles





- Level 1: Get Ready
- Level 2: Get Set

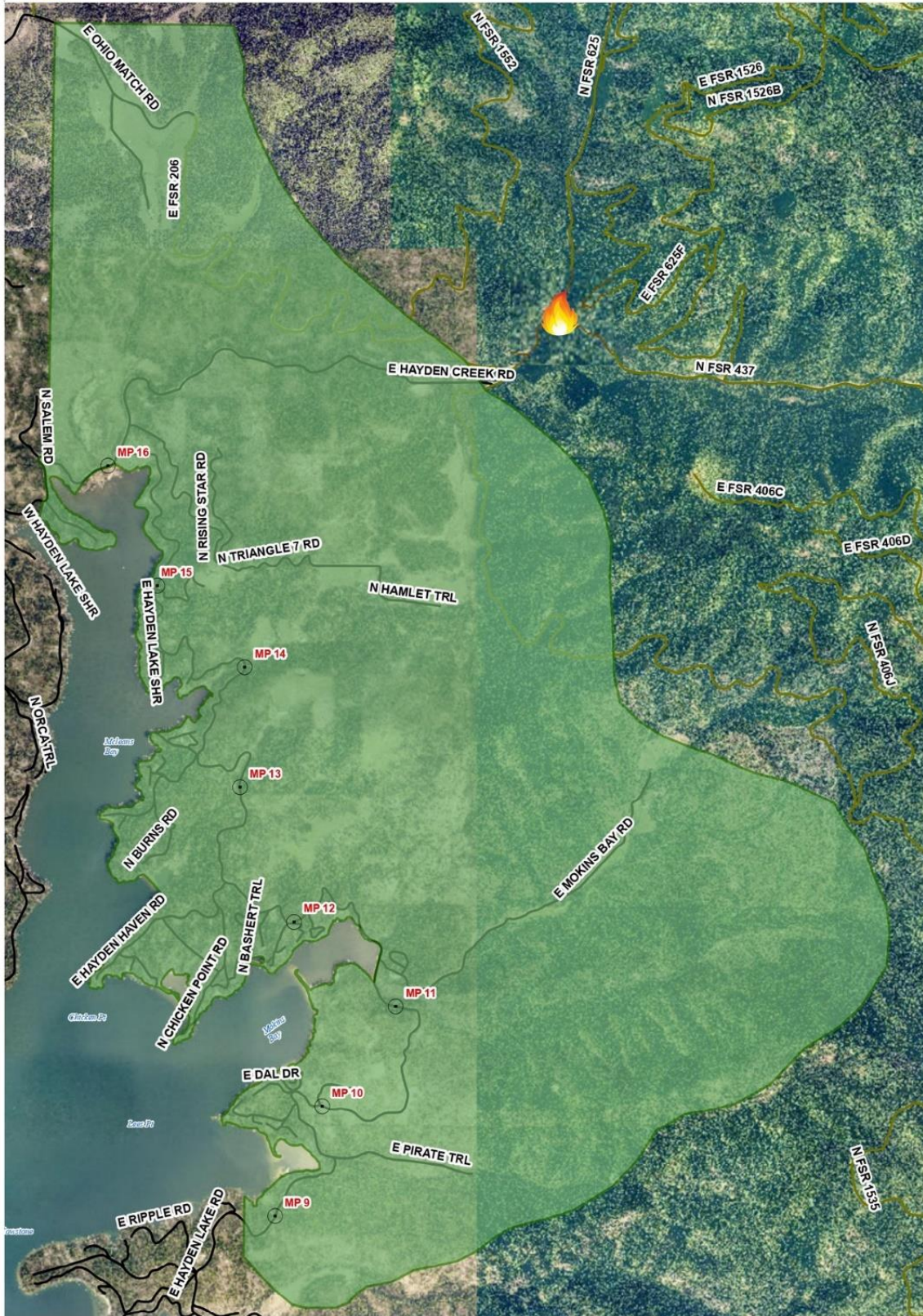




Ridge Creek Fire

Level 1: Get Ready

Kootenai County
August 4th, 2023



○ Mile Markers
— LOCAL ROAD
— SEASONAL ROAD

0 0.25 0.5 1 Miles



Idaho Panhandle National Forests



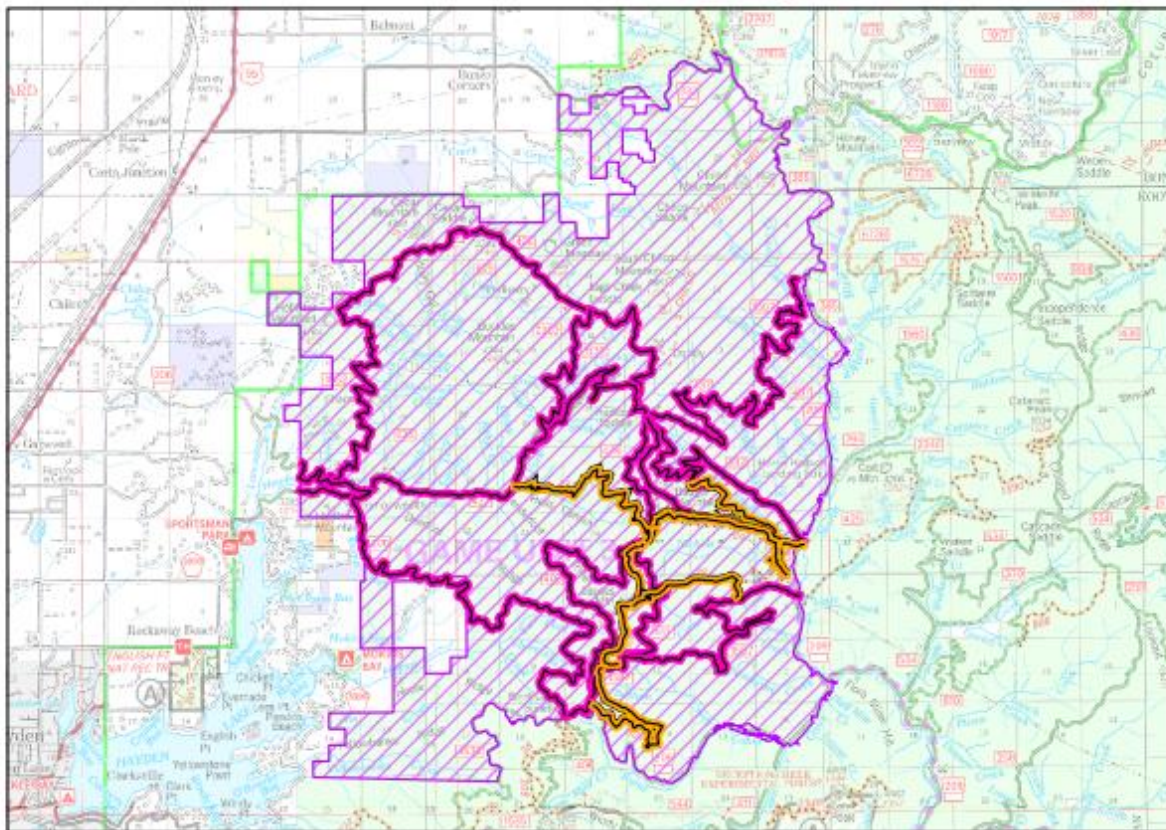
Forest Closure: Ridge Creek Fire Closure

Order Number: 01-04-03-23-002

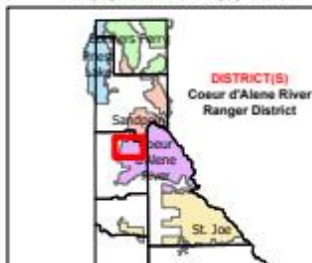
Effective Date : AUGUST 4th, 2023

Rescind Date : SEPTEMBER 30th, 2023

Exhibit A



IDAHO KOOTENAI COUNTY



Closed Road Numbers:

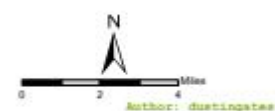
-206
-392
-406
-428A
-437
-1511
-1530
-1552
-1587

Closed Trail Numbers:

-69
-78
-234
-802

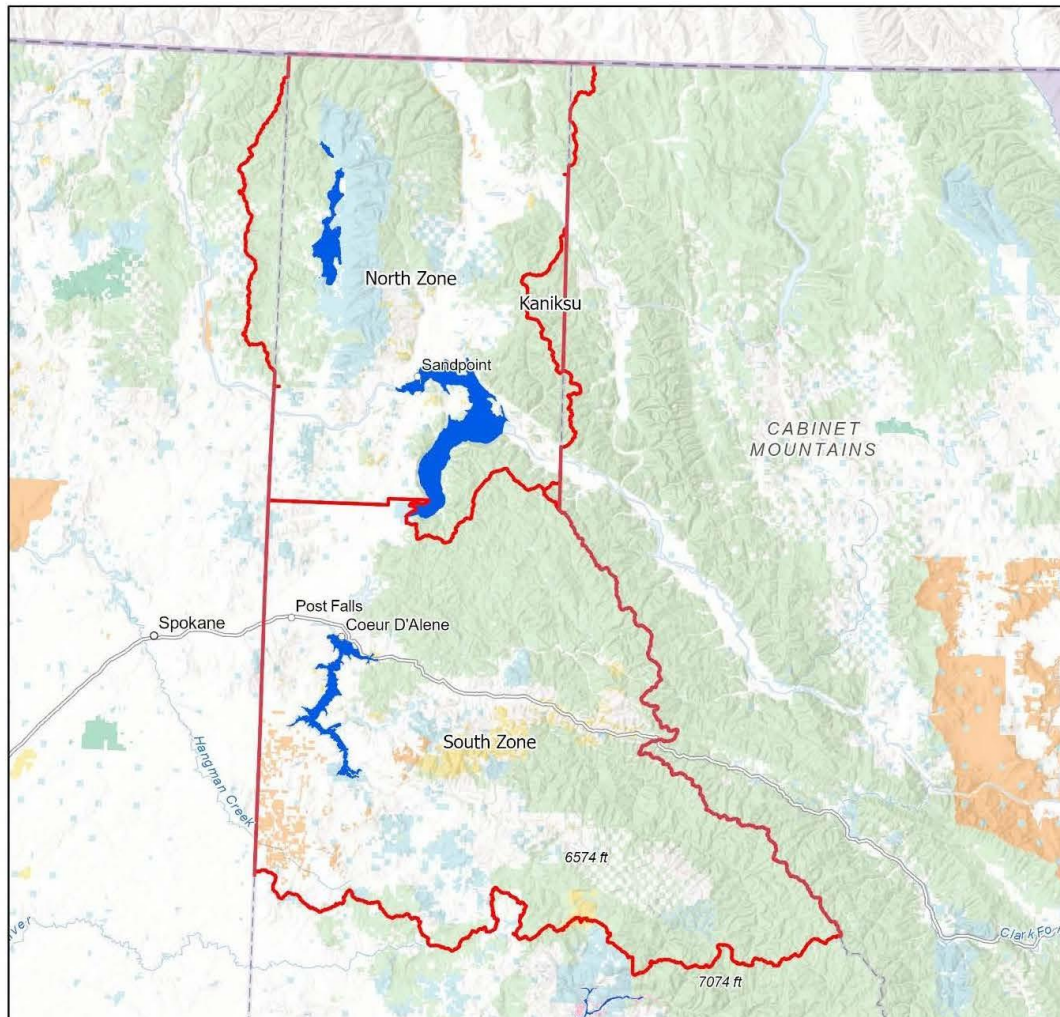
Closures

-  Road
-  Trail
-  Area



Coeur d'Alene

Fire Restriction Areas



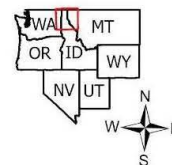
Date Created:
05/18/2022

The surface management status should be used as a general guide only. Official lands records at the Bureau of Land Management (BLM) and other State and County offices should be checked for up-to-date information regarding any specific tract of lands.

No warranty is made by the Idaho Department of Lands (IDL) as to the accuracy, reliability, or completeness of these datasets for individual use or aggregation with other datasets.

Spatial Reference
Name: WGS 1984 Web Mercator Auxiliary Sphere

0 5 10 20 30 40 Miles



FIRE RESTRICTIONS



STAGE II RESTRICTIONS are in effect and **prohibit** the following:



FIRES OR CHARCOAL

Prohibited: Building, maintaining, attending or using a fire, campfire, or stove fire.

Exceptions: Persons using a fire or stove fire fueled solely by liquid petroleum or LPG fuels. Such devices, including propane campfires, may be used only in an area **clear of flammable material**.



SMOKING

Prohibited: Smoking outside an enclosed vehicle or building.

Exceptions: You can smoke while stopped in an area at least 3 feet in diameter that is barren or **cleared of all flammable materials**.



Cross Country Travel

Prohibited: Operating motorized vehicles off designated roads and trails.



Chainsaws/Other Equipment

Prohibited: The following acts are prohibited from 1:00 p.m. to 1:00 a.m. - Operating a chainsaw or other equipment powered by an internal combustion engine; blasting, welding, or other activities that generate flame or flammable material; or using an explosive.

Remember – Fireworks are illegal on federal public lands.



For more information contact your local fire agency